



GAT MONTHLY MEMBERSHIP PROGRESS REPORT

Results as of: 4/30/2023

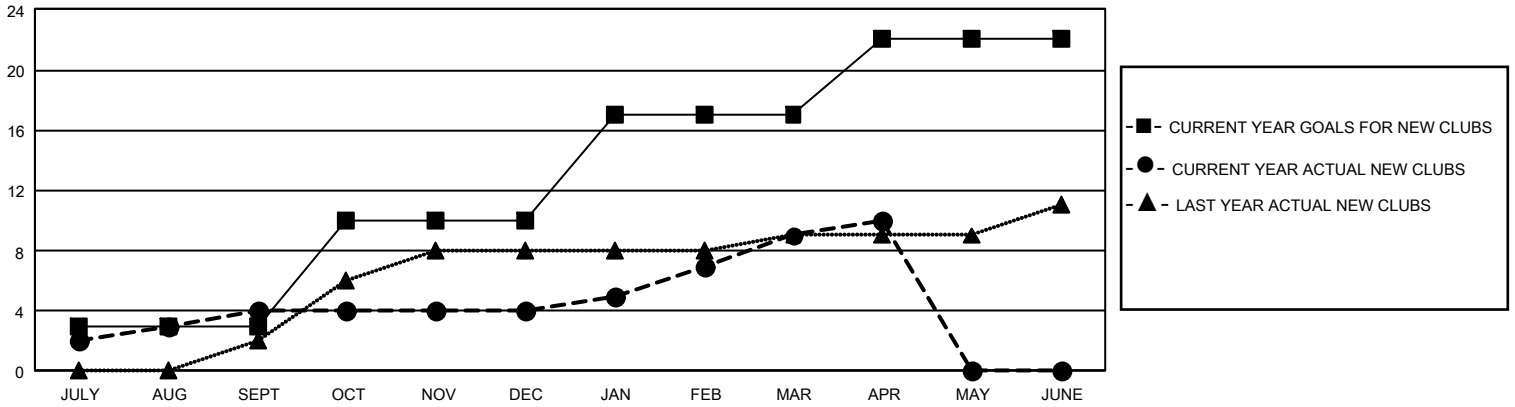
GMT Constitutional Area 2, Group B

REPORT DOES NOT INCLUDE CLUBS IN UNDISTRICTED AREAS.

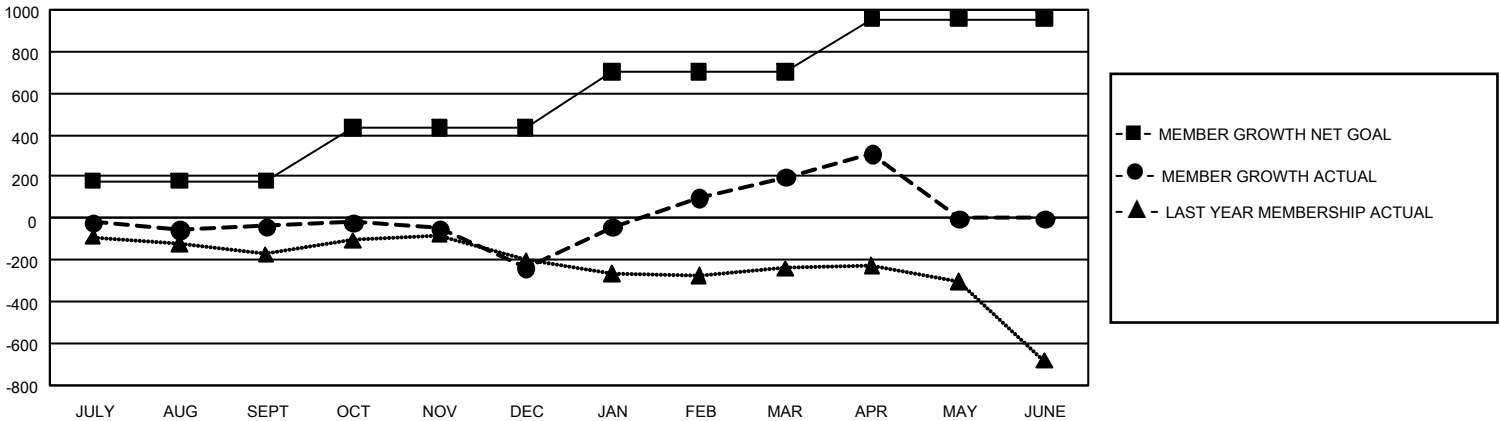
Clubs			
RESULTS FOR 2022-2023			
QUARTER	NEW CLUB GOAL	NEW CLUBS	DROPPED CLUBS
JULY/AUG/SEPT	9	4	4
OCT/NOV/DEC	21	0	6
JAN/FEB/MAR	21	5	2
APR/MAY/JUNE	15	1	1

Members			
RESULTS FOR 2022-2023			
QUARTER	MEMBER GROWTH NET GOAL	MEMBER GROWTH ACTUAL	DROPPED MEMBERS ACTUAL (including transfers)
JULY/AUG/SEPT	180	424	403
OCT/NOV/DEC	255	610	744
JAN/FEB/MAR	270	909	406
APR/MAY/JUNE	250	265	132

GOALS AND ACTUAL NEW CLUBS CUMULATIVE



GOALS AND ACTUAL MEMBERS CUMULATIVE



DROPPED CLUBS: 13	449 CLUBS OF 702 ADDED 1 OR MORE NEW MEMBERS	GENDER DISTRIBUTION	
		MALE 10,149 (62.64%) FEMALE 6,052 (37.35%) NON BINARY 0 (0.00%) PREFER NOT TO ANSWER 1 (0.01%)	
DROPPED MEMBERS		CLICK HERE FOR CUMULATIVE MEMBERSHIP DATA	
DECEASED 242 CLUB CANCELLED 9 OTHER 1,434 TOTAL 1,685	TOTAL FAMILY UNIT MEMBERS 3,017 FAMILY MEMBERS PAYING HALF DUES 1,559		